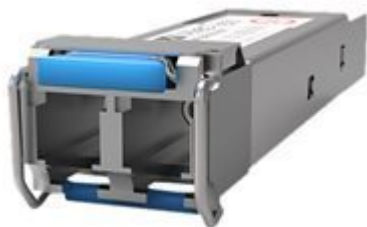


## Produktinformation



### Information

|                    |                |
|--------------------|----------------|
| <i>Tillverkare</i> | Allied Telesis |
| <i>Artnr</i>       | AT-SPLX40/E    |

## Allied Telesis AT SPLX40/E - SFP (mini-GBIC) transceiver module - GigE - 1000Base-LX - LC single-mode - up to 40 km - 1310 nm

The Allied Telesis SP Series delivers flexible, full-duplex Ethernet connectivity. These hot-swappable fiber and copper interfaces simply plug into the SFP slot on all SFP-compatible devices. Configuration can be optimized to meet a wide variety of distance and service requirements.

## Specifikation

### General

|                    |                                    |
|--------------------|------------------------------------|
| <b>Device Type</b> | SFP (mini-GBIC) transceiver module |
| <b>Form Factor</b> | Plug-in module                     |

### Networking

|                                |             |
|--------------------------------|-------------|
| <b>Connectivity Technology</b> | Wired       |
| <b>Cabling Type</b>            | 1000Base-LX |
| <b>Data Link Protocol</b>      | GigE        |
| <b>Data Transfer Rate</b>      | 1 Gbps      |
| <b>Optical Wave Length</b>     | 1310 nm     |
| <b>Max Transfer Distance</b>   | 40 km       |

### Expansion / Connectivity

|                   |   |
|-------------------|---|
| <b>Interfaces</b> | 1 x Ethernet 1000Base-LX - LC single-mode x 2 |
|-------------------|---|

### Miscellaneous

|                            |                    |
|----------------------------|--------------------|
| <b>Compliant Standards</b> | Plug and Play, MSA |
|----------------------------|--------------------|

### Manufacturer Warranty

|                              |                            |
|------------------------------|----------------------------|
| <b>Service &amp; Support</b> | Limited warranty - 2 years |
|------------------------------|----------------------------|

### Environmental Parameters

|                                  |        |
|----------------------------------|--------|
| <b>Min Operating Temperature</b> | -40 °C |
|----------------------------------|--------|

Max Operating Temperature

105 °C